



# European Union Biodiversity Strategy to 2020

## TARGET 4

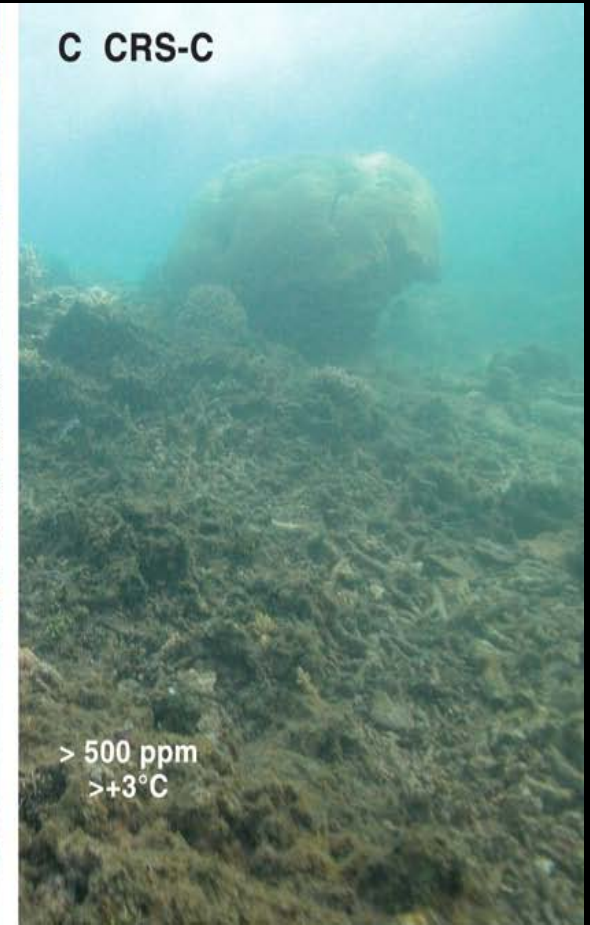


## targets and objectives

# Target 4: Make fishing sustainable and reach good environmental status

**Objective:** Achieve Maximum Sustainable Yield (MSY) by 2015/2020 and good environmental status (GES) of Europe's seas by 2020

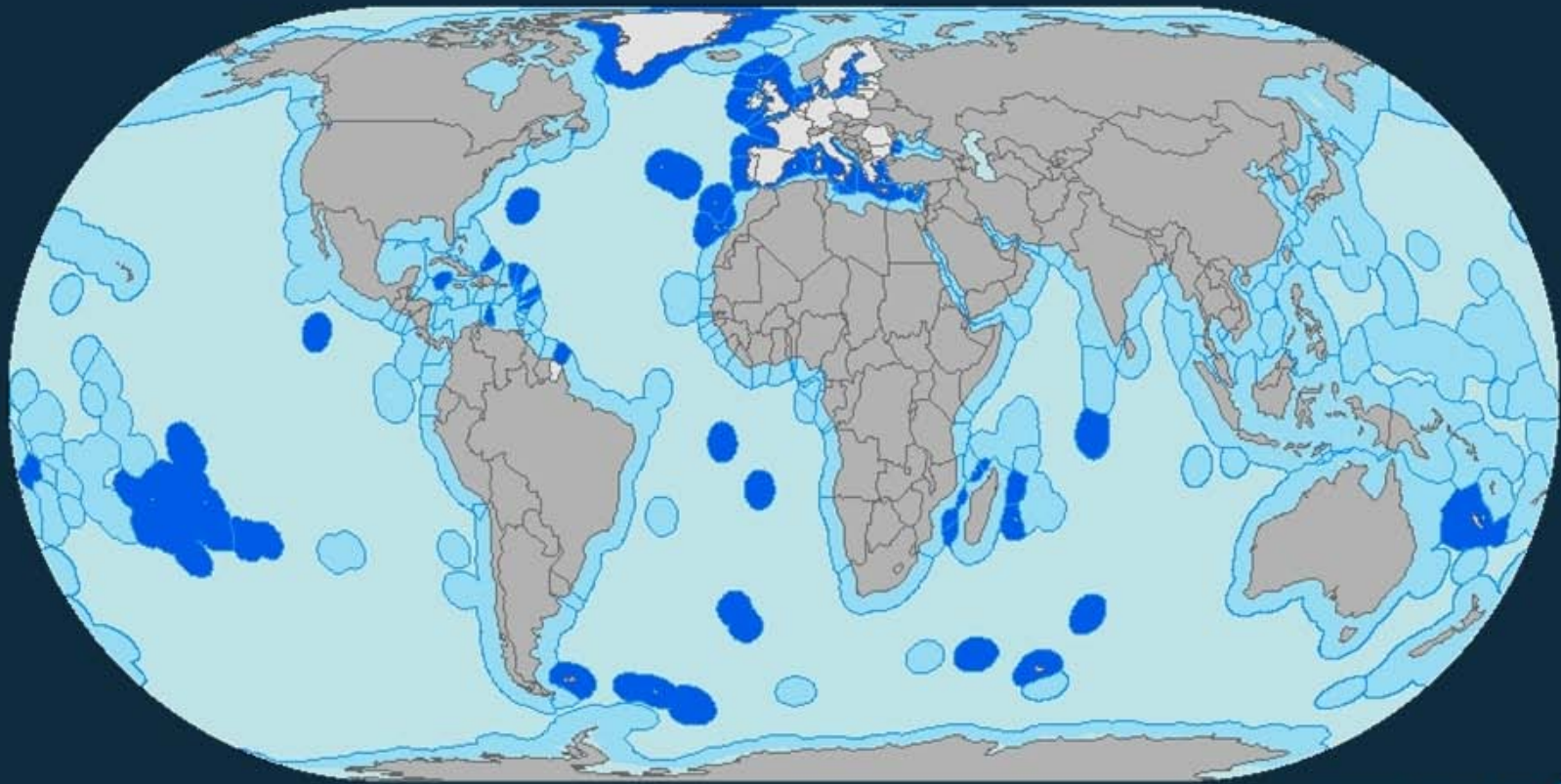
# MORE CLIMATE CHANGE – LESS BIODIVERSITY



Reference: Hoegh-Guldberg et al. 2007



## European EEZs (Economic Exclusive Zones)



25 million km<sup>2</sup>



# actions

- Improve management of fished stocks
  - **Maintain, restore stocks to MSY levels in all areas in which EU fish fleets operate**
  - **Long-term management plans with harvest control rules based on MSY approach**
  - **Step up data collection**
- Eliminate adverse impacts on fish stocks, species, habitats and ecosystems
  - **Eliminate discards, avoid bycatch, preserve VMEs**
  - **Financial incentives for MSFD implementation**



# main policy fields of action

- Reform of the **Common Fisheries Policy (CFP)**  
– *DG MARE leads*
- Implementation of the **Marine Strategy Framework Directive (MSFD)** – *ENV D.2 leads*
- Designation and management of marine protected areas (**MPAs**) under **Natura 2000**  
– *ENV B.3 leads*
- Mapping and assessment of ecosystems and their services (**MAES** → Target 2) – *ENV B.2 leads*

# CFP reform – issues

- MSY
  - **By when: 2015 or 2020?**
  - **Fishing mortality ( $F_{msy}$ ) and/or biomass ( $B_{msy}$ )?**
- Discards
  - **How much: reduction (7% max.) or ban?**
  - **By when: 2016 – 2017 – 2019?**
- Long-term management plans
  - **Harvest control rules?**
- Measures for N2000-MPAs (Art. 12)
  - **Delegated powers?**
- Fleet subsidies (EMFF)
  - **Maintain funds for scrapping of vessels?**



# MSFD implementation

- 1st round of MS reporting and EC assessment
  - 2012 – MS reports under Art. 8 (initial assessment), 9 (GES), 10 (targets)
  - **EC assessment by end 2013**
- Monitoring programmes (Art. 11)
  - **Ongoing assessment of environmental status**
  - **MS reports (2014) + EC assessment**
- Programmes of measures to achieve GES
  - **MS programmes to be developed by 2015**
  - **Including spatial protection measures**





# spatial protection measures

- MPAs under MSFD
  - MS to make info publicly available in 2013 (Art. 13.6)
  - EC progress report (2014) based on MS info
- Marine Natura 2000 sites
  - Focus on progress in site designations (SCIs, SPAs) and effective protection/management (esp. Fisheries measures – re. CFP/EMFF) – see Target 1
  - Marine expert group promoting synergies with MSFD

A photograph of a mangrove forest. The foreground shows a dense network of light-colored, gnarled tree roots extending into the water. The water is dark and reflects the surrounding greenery. In the background, there are lush green mangrove trees with dense foliage. The sky is bright and slightly hazy.

**THANK YOU FOR YOUR ATTENTION**